

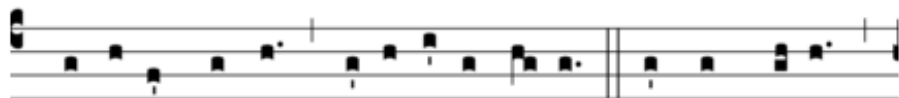
A



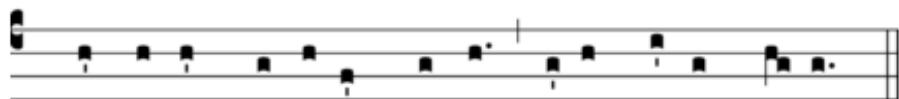
gnus Dé- i, * qui tól-lis peccá-ta múndi:



mi-se-ré-re nó-bis. Agnus Dé- i, * qui tól-lis



peccá-ta múndi: mi-se-ré-re nó-bis. Agnus Dé- i, *



qui tól-lis peccá-ta múndi: dóna nó-bis pá-cem.